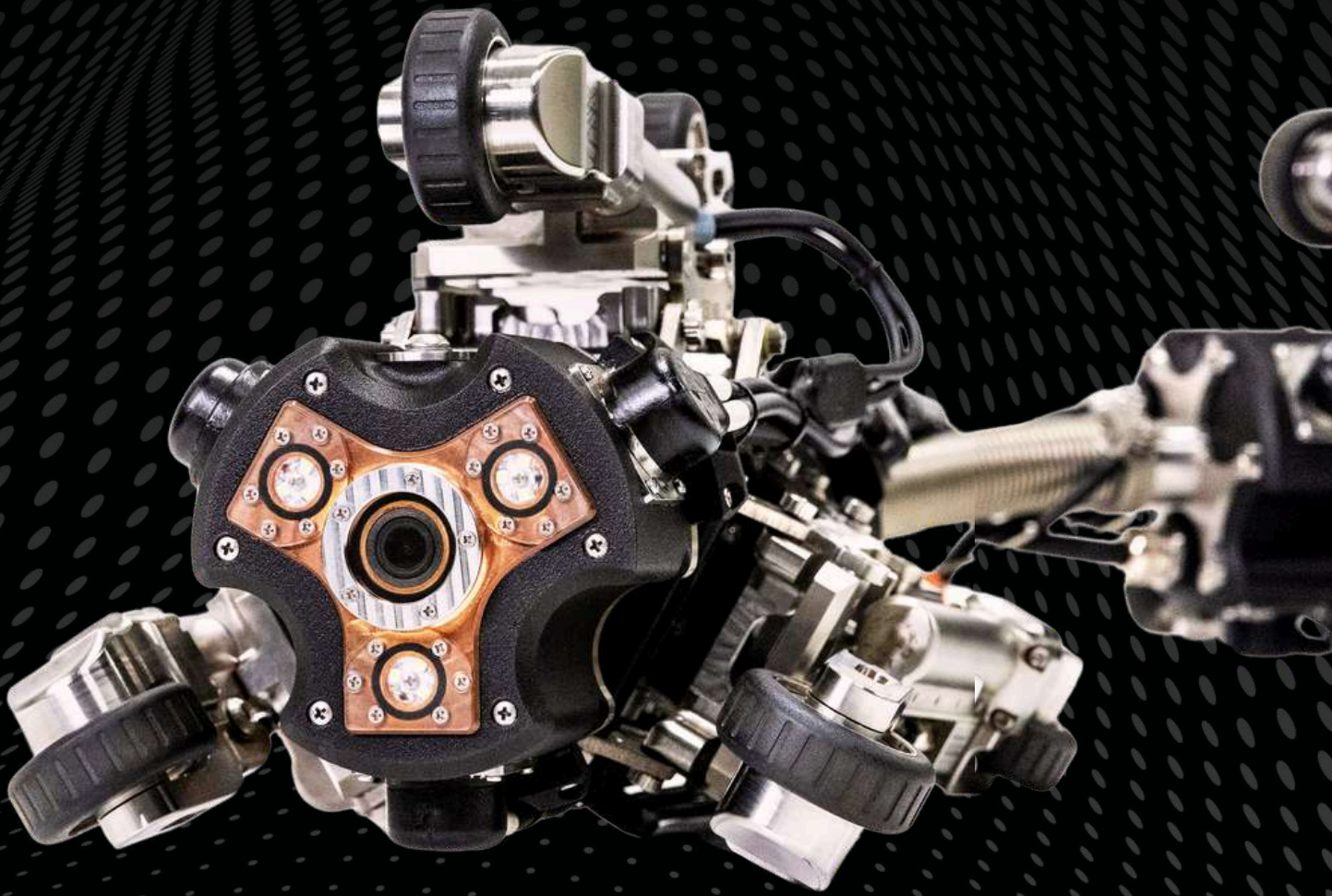


POWERTRAIN

Technical Specifications



nexxis

NEXXIS.COM

POWERTRAIN: BENDING THE RULES ON PIPE INSPECTION

From vertical climbs to tight bends and small pipes, the PowerTrain is a carriage-based crawler engineered to extract realtime data from complex piping networks.

The PowerTrain is a tethered system comprised of dual pipe crawlers, and a rotational sensor payload. The crawlers are the drive units that carry the sensor through the pipe, extracting rich 3D mapping data and high resolution imaging. Effortlessly find problem areas, map them, and tag their location. More data. Less Downtime.

Intuitive Control System

Effortlessly controlled by our Juicebox controller. With all sensor data logged automatically during inspections for HD video and still image reporting.

A: Crawlers

Carry the sensor payload through the pipe, navigating 1.5D bends and verticals. HD cameras and high intensity LEDs

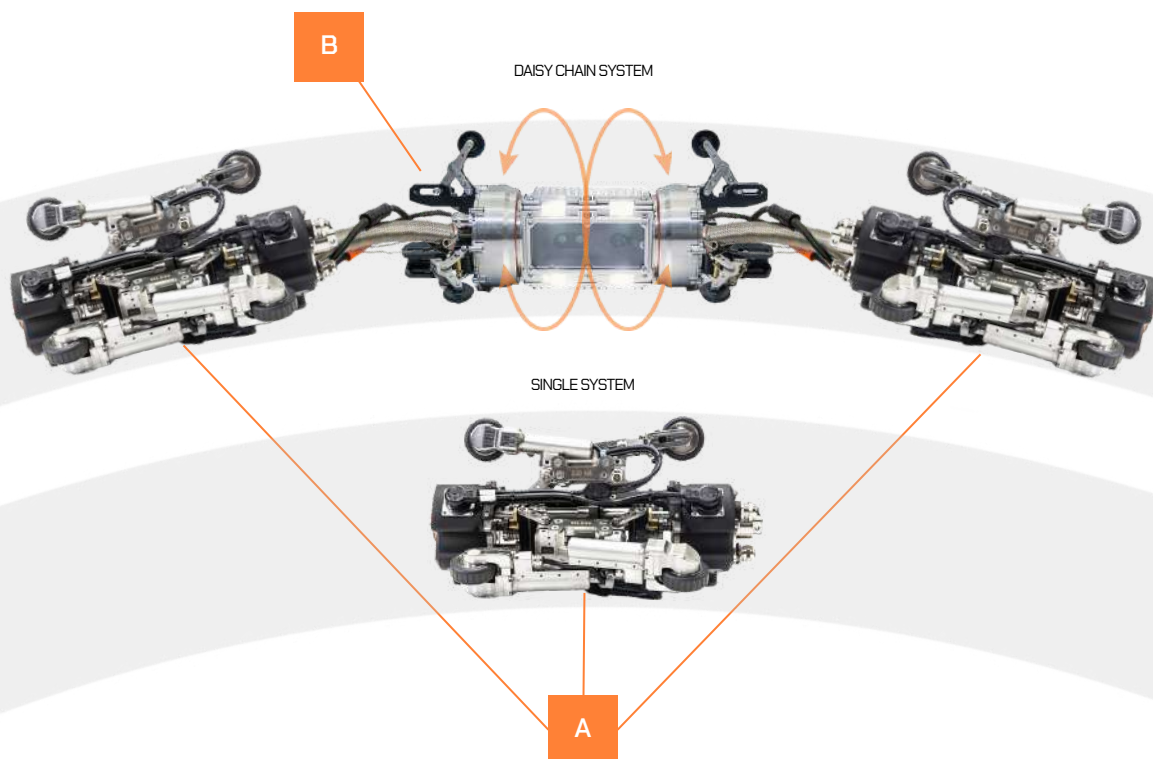
**B:
Rotational Surface Depth Scanner**
Rotates 360° to get full 3D mapping coverage of pipe internals or scanning of weld and corrosion areas.

INDUSTRIES

- Nuclear
- Oil & Gas (Onshore & Offshore)
- Petrochemical
- Municipal (Sewer & Water)
- Mining
- Defence
- Subsea

KEY APPLICATIONS

- Risers & J-Tubes
- Caissons
- Penstocks
- Pipelines
- Corrosion Resistant Alloy CRA
- Vertical Pipes
- Process Pipe Work



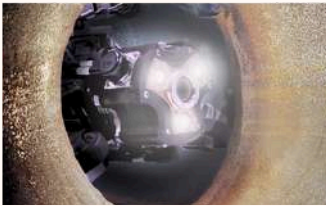
TECHNICAL SPECIFICATIONS

POWERTRAIN

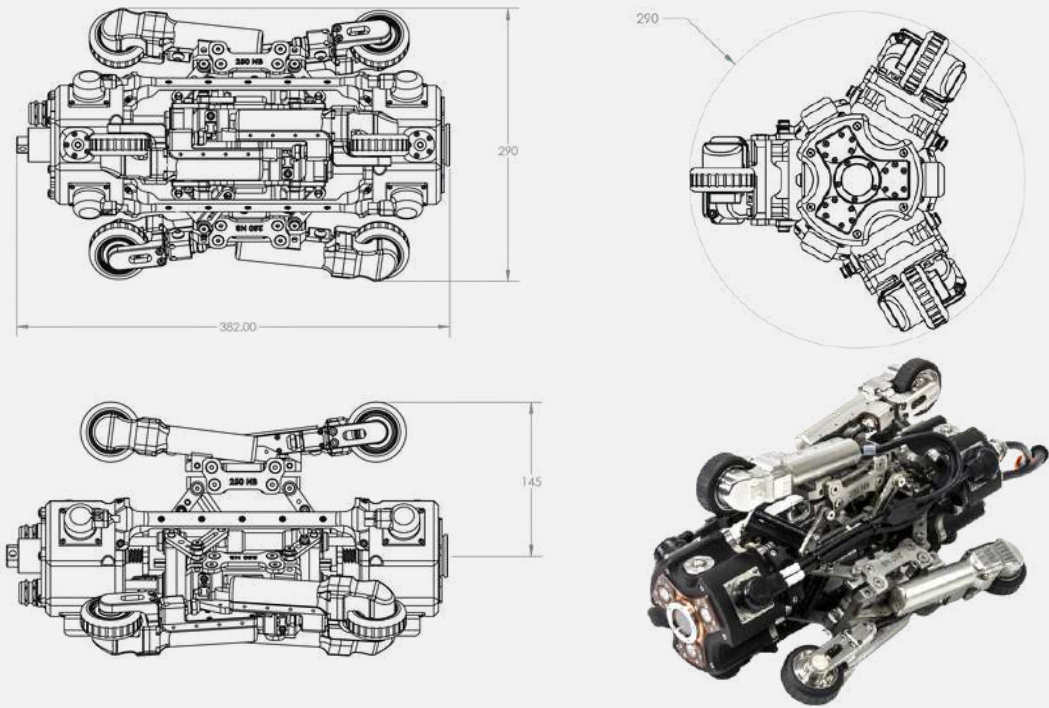
MINIMUM PIPE DIAMETER	ID ø180mm, 2D bends / ID ø200mm, 2D bends / ID ø250mm, 1.5D bends / ID ø300mm, 1.5D bends / ID ø350mm, 1.5D bends
MAXIMUM PIPE DIAMETER	ID ø400mm, 1.5D bends
INSPECTION RANGE	100m / 328ft - 500m / 1640ft
MAXIMUM SPEED	4.5m / 14.7ft per minute
COMMUNICATION PROTOCOL	Ethernet over Fiber Optics
OPERATING TEMPERATURE	0° - 50° C / 32° - 122° F
OPERATING VOLTAGE	72 Vdc
STANDARD COMPONENTS	Nexxis Fiber-Optic Reel Juicebox Controller 2x Vetol X Pipe Crawlers 1x Rotational Laser Scanner

Modular System for Multiple Configurations

Engineered for rugged deployment, the modular build allows rapid replacement or reconfiguration of components in the field. The rotational sensor can also be reconfigured for other NDT methods, including UT Thickness Testing of the pipe walls.



** below measurements indicate crawler measurements only. For pipe diameter min-max see chart above**



HOUSTON

315 Odyssey, Suite D
Webster, TX 77598
United States
Ph: +1 (713) 258-6061

AUSTRALIA

35 Peel Road
O'Connor, WA 6163
Australia
Ph: +61 (08) 9418 4952

SINGAPORE

37 Jalan Pemimpin
#03-02 MAPEX
Singapore 577177
Ph: +65 3158 0269

GET IN CONTACT